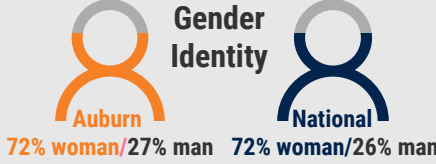
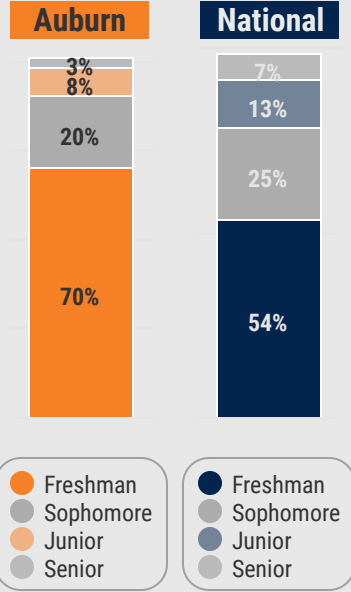


# NASPA Consortium Study: Residence Life

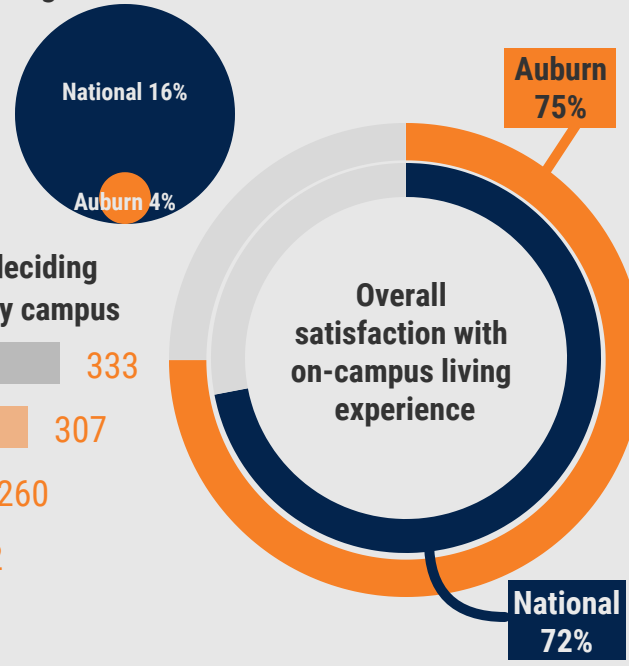
## Auburn University Student Affairs

Auburn Student Affairs University Housing administered the [NASPA Consortium Residence Life Benchmark](#) survey in March 2020 via email to all 4,478 students living in on-campus Auburn University housing. 888 (20% response rate) students participated in a 108-question survey with 566 students responding to all items. The following data points represent how **Auburn University** student responses compared to a **National Average** of responses from ~1,850 students at six participating institutions.

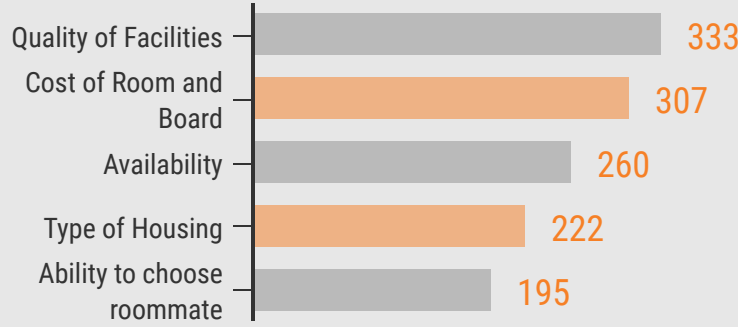
### Class Standing



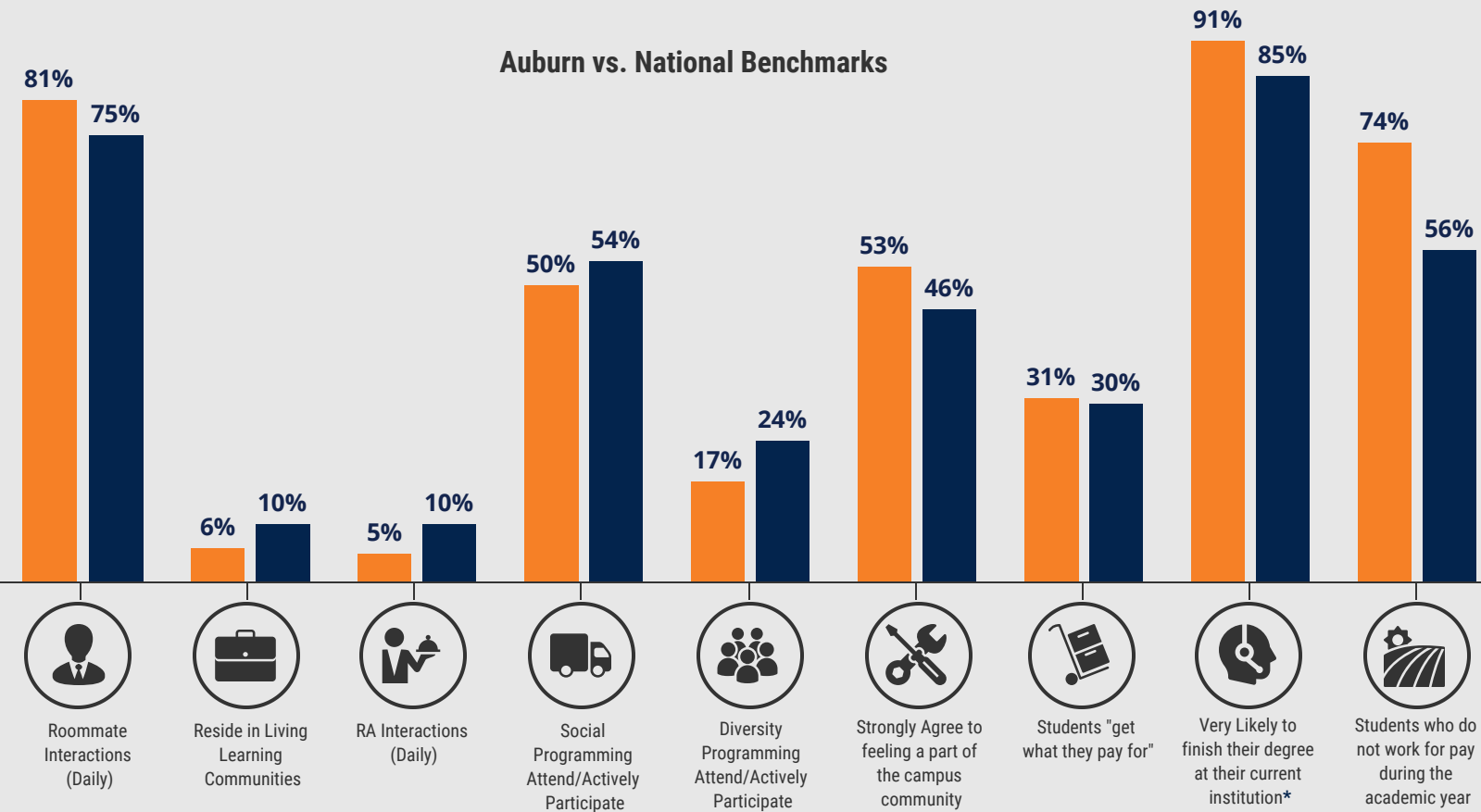
### First-generation student



### Top 5 most important considerations when deciding whether or not to live on the Auburn University campus



### Auburn vs. National Benchmarks



\*indicates a statistically significant difference

Participating Institutions: Auburn University; Clarion University; University of Idaho; University of Massachusetts - Boston; University of Nevada, Las Vegas; West Texas A&M University